

TWO SONGS

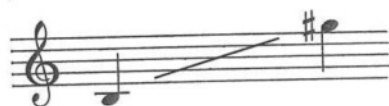
by

Nancy Van de Vate

For medium or high voice and piano

I. DEATH IS THE CHILLY NIGHT

(Heinrich Heine – Kate Flores)



2. LONELINESS

(Rainer M. Rilke – Kate Flores)



WATERLOO

Death Is the Chilly Night

Heinrich Heine
*(trans. Kate Flores)

Nancy Van de Vate

Slowly $\text{♩} = \text{c. } 88-92$

Piano introduction in G major, 3/4 time. The score consists of a treble clef staff with a whole rest and a grand staff (treble and bass clefs) with piano accompaniment. The piano part begins with a *p* dynamic and features a melodic line in the right hand and a harmonic accompaniment in the left hand.

Vocal line and piano accompaniment for the first line of the poem. The vocal line is in G major, 3/4 time, starting with a *p* dynamic and moving to *mp*. The piano accompaniment continues from the introduction. The lyrics are: "Death is the chil-ly night,"

Vocal line and piano accompaniment for the second line of the poem, marked with an asterisk and *ossia*. The vocal line is in G major, 3/4 time, starting with a *p* dynamic. The piano accompaniment includes a *cresc.* marking. The lyrics are: "Life is the tor-rid day."

* Reprinted by permission from "An Anthology of German Poetry from Hoelderlin to Rilke", ed. Angel Flores - Doubleday and Co. Inc. Garden City, New York, 1960.

* *ossia*

Musical notation for the ossia of the second line of the poem. It shows a vocal line in G major, 3/4 time, with the lyrics "Life is the ter-rid day." written below it.

Copyright 1962 by N. Van de Vate
Copyright 1966 assigned to Peter McKee Music Co. Limited
Sole selling rights assigned to
WATERLOO MUSIC COMPANY LIMITED
International copyright secured. All rights reserved.

Unauthorized duplication of this document or parts of it is prohibited by Austrian and International Copyright Law

shop.musicaustria.at authorized free sample copy